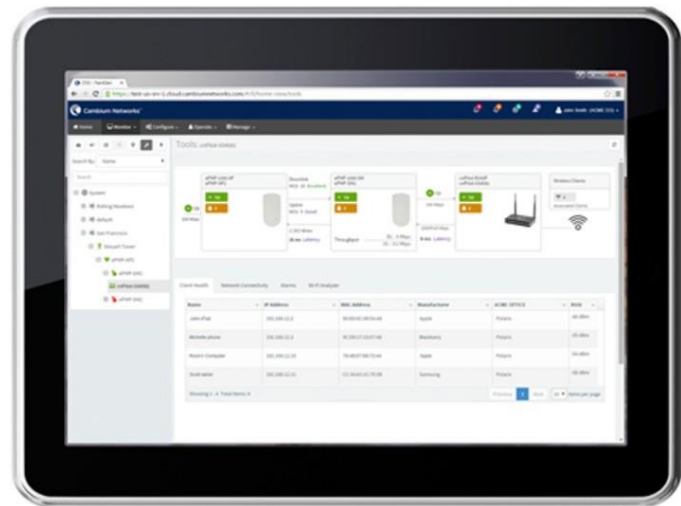




cnMaestro™

Wireless service providers and enterprises need an easy to deploy management system that enables them to efficiently manage and grow their network. Cambium Networks cnMaestro management platform is tailor-made to simplify management of your Cambium network.

The cnMaestro platform is available in the cloud and is deployable on premises, built from the ground up for secure, end-to-end network lifecycle management, inventory management, onboarding devices, daily operations and maintenance. By offering full visibility across the entirety of a network, cnMaestro greatly simplifies management of all network devices.



Managing it all

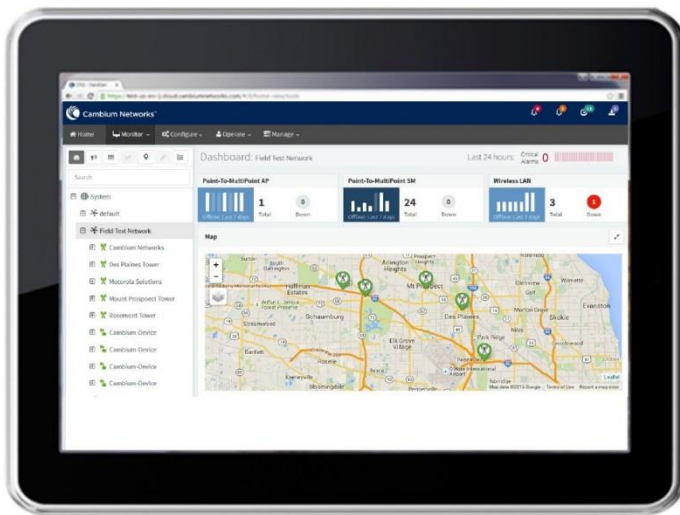
With vast scalability, cnMaestro has a full set of features targeted to simplify management of Cambium Devices

- **Full Visibility Across the Network**
 - Single pane of glass to manage an entire network, including backhaul point-to-point (PTP) links, point-to-multipoint (PMP) access and WiFi
 - Dedicated dashboards for each device, with common and centralized upgrade and device configuration workflows to minimize the learning curve for network managers
- **Client End-to-End Wireless Troubleshooting**
 - One-click functionality reveals the entire chain of network nodes under management, related to the problem area, displaying the results of performance and latency tests, as well as sub-system level health checks on a single screen
 - Managers will see network elements on Google maps that may be causing issues and determine timely solution
- **WiFi Controller**
 - Deploy enterprise grade hotspots with built-in personalized branding capabilities
 - Use vouchers to provide authenticated access to wireless clients, with multiple tiers of service
 - Use Social login to provide wireless access and business analytics on wireless users
- **Frictionless Deployment**
 - Define device configurations in advance and have them automatically applied at the time of installation
 - Ensure large networks are kept up to date by easily managing software upgrades and configuration changes

- **Power of Secure Cloud**
 - Access *cnMaestro* quickly from wherever you are using secure HTTPS. No need for VPN connections
 - The cloud management system always has the latest updates and the latest device software is always at your fingertips
 - Easily scalable, no need for up-front hardware expense with *cnMaestro* cloud, no need to deal with the complexities of server management and deployment
- **Designed for Wireless**
 - Many ways to view your wireless network data including maps, tables and historical charts to quickly assess a single device or an entire group
 - Wireless parameters and statistics are automatically available enabling operators to focus on designing and growing their network, not their management system

Detailed Features

cnMaestro is a full-featured network management system. The features will continue to be enhanced and extended over upcoming releases. The functionality in *cnMaestro* includes the following:



- **Hierarchical Dashboards**
Visualize your devices from tower to edge with customized dashboards for each device type
- **Advanced Troubleshooting**
Display tower-to-edge status in a single graphic, view WiFi client details and health, and troubleshoot client connectivity directly on the AP
- **Notifications**
View immediate status with alarms, and troubleshoot customer issues by filtering on alarm history and reviewing events
- **Device Inventory**
Access your devices at the system level, or by network, tower, or sector. Device data can be exported in PDF or CSV formats
- **Statistics and Trending**
View historical radio and network statistics
- **Bulk Image Upgrade**
Upgrade the software images in a sector or across sectors in a single job. Queue upgrade jobs during the day so they can be run in the evening, when the network is less utilized
- **GUI Wizard Configuration for *cnPilot* WiFi Devices**
Simplified configuration management leveraging a GUI wizard to configure devices and automatically identify when devices have been changed locally

- **Template-Based Configuration**
Push configuration to single devices or to groups of ePMP and PMP devices across your network using templates
- **Maps and Map Modes**
Leverage Google Maps satellite view to position your devices and visualize their health and connectivity. Change the mode of the map to graphically display various wireless key performance indicators
- **Zero Touch Onboarding**
Preconfigure supported Cambium devices so they will be automatically on-boarded when provided with network connectivity
- **PMP Zero-Touch SM Onboarding**
If the AP has been on-boarded to *cnMaestro*, the SMs under that AP will automatically be available in *cnMaestro* to be claimed and on-boarded
- **Multiple Administrators**
Invite colleagues by email to manage the devices in your organization's *cnMaestro* account